

DCC NEWSLETTER

VOLUME 2

4/1/2001

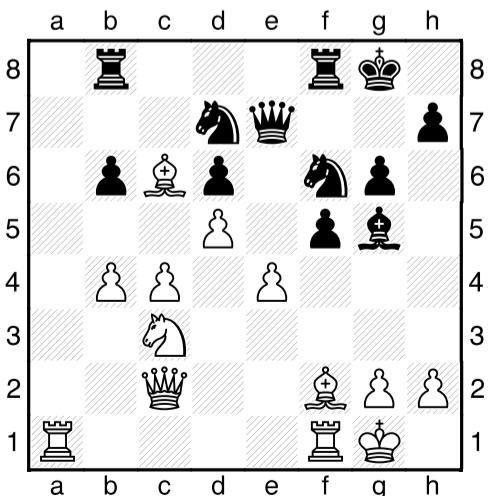
Player of the Quarter

Taras Oduskin

Taras won the 3rd Annual Ken Smith U2000 and also the 2001 National Open Reserve section. Congratulations.



Griggs,S (1878) - Odushkin,T (1905) [B56]
Ken Smith Memorial U2000 Dallas, TX
1.e4 c5 2.Nf3 Nc6 3.d4 cxd4 4.Nxd4 Nf6 5.Nc3 d6 6.f3 e5 7.Nb3 Be7 8.Be3 0-0 9.Qd2 a5 10.Bb5 Be6 11.Nd5 Bxd5 12.exd5 Nb4 13.c4 b6 14.0-0 Na6 15.Nc1 Nc5 16.Ne2 Nfd7 17.b3 f5 18.Nc3 Bf6 19.Rab1 Qe7 20.Qc2 Bg5 21.Bf2 g6 22.a3 Nf6 23.b4 axb4 24.axb4 Ncd7 25.Bc6 Rab8 26.Ra1 e4 27.fxex4



27... Ne5 28.exf5 gxf5 29.Rae1 Nfg4 30.Bd4 f4 31.Kh1 Ne3 32.Bxe3 fxe3 33.Qe2 Rxf1+ 34.Rxf1 Rf8 35.Rxf8+ Qxf8 36.Nd1 Qf4 37.Bb5 Ng4 38.g3 Qe4+ 39.Kg1 Ne5 40.Nc3 Nf3+ 41.Kf1 Qf5 42.Kg2 Nd4 43.Qb2 Qf3+ 44.Kg1 e2 45.Qa1 Be3# 0-1

Congratulations to all Metroplex kids that did well at the 2001 Texas Scholastic Championships:

Kindergarten:

Matthew Stith, Hailey Winston, Tyler Hagen

Primary J V:

Melanie Wannamaker, Evan Price, Michael Carr, Bethany Elementary, Netcache, Gullede Elementary, Kramer Elementary and Ridglea Hills Elementary.

Primary Championship:

Taylor Martin, Melinda Shoker and Ridglea Hills Elementary.

Elementary J V:

Jacob Van Der Wiel, Colleen M Woolsey, Conner Pate, Matthew Cox, Mattia Flabiano, Netcache, North Ridge Elementary and Wyatt Elementary.

Elementary Championship:

Peter Yeh, Stephanie Ballom, Mason Roy Harry, Joan E Gass, Mary Orr Intermediate, Hockaday School and Bethany Elementary.

Middle School Championships:

Gene E Pershwitz, Bryan Pernes, David T Gorrell, Saint Marks School of Texas and Rogene Worley Middle School .

High School J V:

Donnie L Harrison.

High School Championships:

Alex M Echeverry, John Sneed, North Side High School and Lamar High School.

The Dallas Chess Club is resuming its Friday Night Grand Prix series. This year's sponsor is Southwest Chess Enterprises. Check www.dallaschess.com in the near future for Grand Prix rules. Grand Prix starts on Friday May 18th.

UPCOMING MAJOR EVENTS:

April 14-15, 2001

DCC Grand Prix 1. 5SS, 30/90, SD/1. GPP: 10. Hyatt Regency Dallas At Reunion, 300 Reunion Boulevard, Dallas TX 75207. EF: \$35 (\$20 Jr/Sr/Hcap/Full Time College Student. Counts as ½), \$\$ (G \$200-100, X \$100-50 based on 5 full X entries, U2000 \$100-50 based on 5 full U2000 entries. Reg. 8-8:45am. Rds. 9-2:15-7:15, 9:30-2:45. ½ pt bye if req. before rd 2. HR: \$89/89. 800-233-1234 res. by 3/30 & ask for Chess Rates. Info: 972-231-2065, E-mail: dcc@dallaschess.com NS, NC, W.

April 14-15, 2001

DCC Amateur & Novice 1. 5SS, 30/90, SD/1. Hyatt Regency Dallas At Reunion, 300 Reunion Boulevard, Dallas TX 75207. EF: \$25 (\$15 Jr/Sr/Hcap/College. \$15 EF's counts as ½) *Amateur*: Open to U1800. \$\$ Class B \$150-50 b/10 B entries, U1600 \$150-50 b/10 U1600 entries. *Novice*: Open to U1400 and unrated. \$\$ \$150-50 b/10 entries, Maximum unrated can win is \$50. Registration: 8-8:45am. Rds. 9 - 2:15 - 7:15, 9:30 - 2:45. HR: \$89-89. 800-233-1234 reserve by 3/30 and ask for Chess Rates. Info: 972-231-2065, E-mail: dcc@dallaschess.com NS, NC, W.

May 25-28 or 26-28 GPP: 15

Texas State And Amateur Championships. 7-SS, (Rds 1-3 G/120, rds 4-7 40/2,SD/1). J W Marriott, 5150 Westheimer, Houston TX 77056. \$\$5000 b/175 full ent, 2 Sections: *Championship*, open to 2000 & above and to 2001 Texas High School Scholastic Champions. \$\$800-500-200, X 600-300. *Amateur*: Open to Under 2000 & unrated. \$\$600-300. B, C, (D/under) each 400-100. Unr. \$200. *Both*: TCA membership required. OSA. EF: \$40 if received by 5/24, \$50 at site. \$25 Junior/Senior/full time College/Handicap if received by 5/21, \$30 at site (counts ½) 4 day schedule: Reg 5/25, 6:30pm-7:15. Rd 1 at 7:35. Rds 7:35, 1:30-6, 9-3:45, 8:30-3:15. 3 day Schedule: Reg 5/26 8-8:30 am, Rd 1 at 9 then merge with 4 day. Foreign Unrated. must play in Championship section. June Supplement will be used. HR: \$89/89/99/99. 713-961-1500 reserve by 5/4 and ask for Chess Rates. Up to two ½ pt byes available if requested before rd 2, but byes for rd 6 AND 7 not permitted. Ent: Southwest Chess Enterprises, 4060 Old Town Rd, Addison, TX 75001. Info: Brad Bradford, bradb4@home.com or www.texaschess.org NS. NC. W. FIDE

